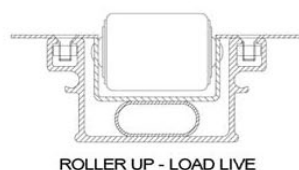
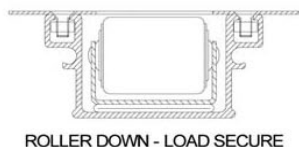




PALLET LOADING SYSTEM FOR VANS



- Manual loading systems for 3-4 pallets in a van
- Pneumatically operated, rise and fall rollerbed pallet transfer system in modular lengths to fit standard van sizes.
- Loads pallets, cage pallets, stillages, post pallets and slipsheets up to 1000kgs in weight. (max 600kg per m)
- Powered by 12v compressor
- Connected via the cigarette lighter socket of the van
- Comes in 2 sections - master 2.2m, extension piece to suit all wheel base applications
- UK patent application 0817139.9



SAFE...

Driver does not need to enter van, rollerbed with full live/dead roller functionality

SPEED...

Load / Unload in under a minute

PORTABLE...

easy to install or transfer from vehicle to vehicle, no tools required, can be installed by driver

Contact sales@lod.ie 01 4036900