

Ford Transit Connect Van

Feel the difference



If the tiling on the opposite page makes you feel a little uneasy, then we speak the same language.

Just like us, you believe in doing a professional job. Just like us, it's a matter of pride.

That's why all our commercial vehicles – and the service that stands behind them – are designed to help make your business run like clockwork.

It's simply a matter of one professional dealing with another. You wouldn't expect anything less from us.



Professional workmate

Tough design and a no-nonsense attitude. A refreshed cabin environment with a host of superior, car-like features. The choice of short or long wheelbase options. And an appetite for hard work. That's the unbeatable Ford Transit Connect.





Short and Long Wheelbase

With short and long wheelbase options, a large functional load box, and up to 4.3 cubic metres of versatile loadspace with the passenger seat folded, the Ford Transit Connect will keep your business on the move.

SWB Van

- 2467 mm maximum load length
- 833 kg gross payload (T220), 648 kg (T200)
- 3.41 cu.m loadspace (passenger seat folded)
- Space for two Europallets*
- Room to stow a 2.4 m pipe with the passenger seat folded
- Turning circle 11.0 m (kerb to kerb)

LWB Van

- 2714 mm maximum load length
- 902 kg gross payload (T230)
- 4.3 cu.m loadspace (passenger seat folded)
- Space for 8' x 4' building boards
- Room to stow a 3 m pipe diagonally with the passenger seat folded
- Turning circle 11.9 m (kerb to kerb)



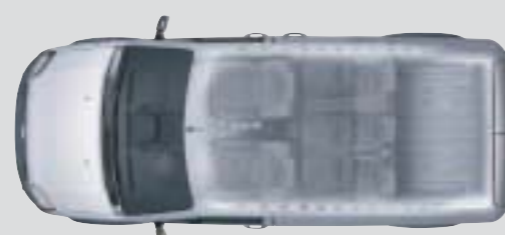
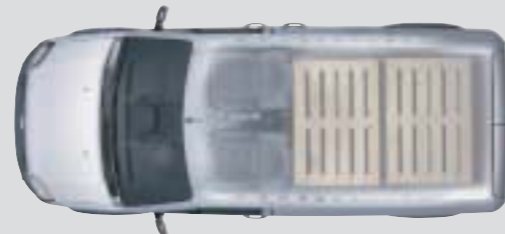
*Without bulkhead fitted.



SWB van.



LWB van.



1.8 Duratorq TDCi
Powerful diesel engine delivers up to 110 PS and 280 Nm of torque.



Powerful partner

The Ford Transit Connect Van sets the standard in its class, engineered to provide a level of rugged durability never before seen in the compact commercial vehicle market.

Built and tested to Medium Commercial Vehicle standards, the Ford Transit Connect Van delivers outstanding strength and durability. The extensive use of thick, high-strength steel, a reinforced body shell with partial double-skin sides and twin side cross-members, plus a tough boron steel front cross-member all contribute to its outstanding low cost of ownership and useful vehicle life.

Handling

Independent MacPherson strut front suspension combines with multi-leaf rear springs (single leaf springs on SWB 648 kg models) to endow the Ford Transit Connect Van with superior handling and roadholding, even when fully loaded. Accurate and responsive steering is fitted as standard and gives the SWB model a turning circle of just 11.0 metres, kerb to kerb.

Engines

The Ford Transit Connect Van is powered by a choice of refined and dependable 1.8-litre Duratorq TDCi common rail diesel engines. Designed and engineered to deliver the optimum blend of efficient power and economy, the range offers varying performance to suit a wide range of requirements. All engines comply with Euro Stage IV emissions legislation and a maintenance-free coated diesel particulate filter (cDPF) is available as an option on the 90 PS and 110 PS engines.

***Available from July 2010 with optional vDPF (vaporiser Diesel Particulate Filter).



Brakes and wheels

New to the Ford Transit Connect is Electronic Stability Programme (ESP). All models are fitted with 15-inch, five-stud wheels (with reinforced tyres on selected versions) for greater load-carrying capacity. Large front and rear disc brakes, combined with standard ABS help to extend service life and deliver outstanding stopping performance. All models have Auto Hazard Warning Lights which activate the hazard lights in an emergency braking situation.

*Transit Connect Sport Van is fitted with 18" alloy wheels as standard.

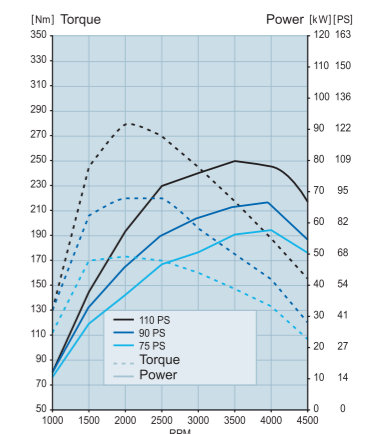
Diesel (FWD)

1.8 Duratorq TDCi, available in three power and torque configurations:

- 75 PS/175 Nm
- 90 PS/240 Nm
- 110 PS/280 Nm

Transmission

- 5-speed manual transmission



Built-in fixings

Allow the installation of racking systems without further drilling.



With a generous load box and outstanding access, the Ford Transit Connect Van will handle almost any task you throw its way.

Standard features include:

Whether you are carrying goods, work materials or tools, the Ford Transit Connect Van provides all the loadspace you will need.

Upright body sides help to make the most efficient use of the loadspace, particularly when racking is used.

Minimal rear wheel arch intrusion translates into a huge 1226 mm of clear load-floor width – enough to carry two Europallets in the short wheelbase version, or a stack of 8' x 4' building boards in the LWB version. Six DIN-compliant tie-down eyes are also fitted, allowing loads to be securely fixed.

Standard features include:

- 1226 mm minimum width between rear wheel arches
- Flat side panels, ideal for signwriting
- Pre-threaded reinforced fixing points allow easy installation of universal racking systems or shelving without the need to drill holes into the vehicle
- Six DIN-compliant floor tie-down eyes allow loads to be securely fixed
- DIN-compliant full bulkhead
- Standard fold-flat front passenger seat provides a level cargo area for longer items, and doubles up as a handy work surface or table

Optional features include:

- Range of bulkhead options
- Rear roof flap (SWB with cargo doors)
- Purpose-designed roof rack
- Roof rack crossbars
- Ladder holder and rollers
- Tow bar with electrical kit
- 255° rear cargo doors for wide-open access (SVO option)
- Rear tailgate (SWB only)
- Load floor liner

Half-height, full-width steel bulkhead
(Option)



Folding DIN-compliant mesh bulkhead
Allows longer items to be carried and protects the driver against shifting loads. (Standard)



Sliding side load doors
None, one or two side load doors available
Unglazed. (Option)



Tie-down eyes (DIN-compliant)
(Standard)



Rear roof flap
Enables long or awkward loads to be safely carried. (Option on SWB with cargo doors)



Tailgate
Unglazed or glazed. Heated glass (option).
Privacy glass and wash/wipe also available.
(Option)





Door mirrors
Large door mirrors, with blind-spot eliminators, fold flat to avoid accidental damage when parked.



The Ford Transit Connect Van is engineered to the highest possible levels of safety and security for your peace of mind.

Safety and security

Advanced computer modelling led to the development of a body structure that combines energy-absorbing crumple zones with a rigid shell for maximum occupant protection.

High-strength steel beams inside the front doors help to prevent intrusion in a side impact, while behind the front bumper is a boron steel cross-member that is designed to absorb and safely channel crash energy away from the occupants.

Security is paramount in a commercial vehicle. So the Ford Transit Connect incorporates a combination of state-of-the-art features to make it as secure as possible.

Standard safety features include:

- Driver's airbag
- Height-adjustable inertia reel seat belts with grabbers and driver's seat belt pre-tensioner
- Auto Hazard Warning Lights: the turn indicators automatically flash under heavy braking as a warning to all
- Anti-lock brakes with electronic brake-force distribution (EBD)
- Anti-submarining ramps in front seat bases
- Electronic Stability Programme (ESP) with Emergency Brake Assist

Optional safety features include:

- Passenger's airbag* with deactivation switch
- Side airbags* (not available with fold-flat passenger's seat)

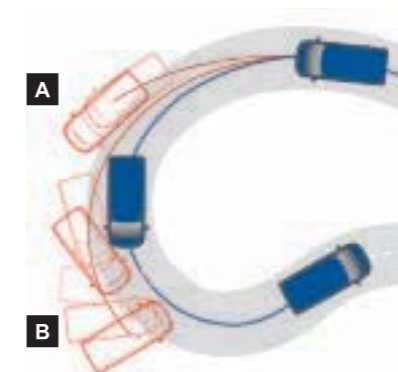
Standard security features include:

- Ford's 'Safeguard' Passive Anti-Theft System (PATS) engine immobiliser
- High-security shielded locks with strengthened mountings
- Unique lock-in-latch door lock system eliminates cables and rods between the lock and the latch
- Central/double locking
- Remote keyless entry with rolling codes
- Key-operated bonnet release
- Visible Vehicle Identification Number (VIN)

Optional security features include:

- Perimeter alarm
- Choice of bulkheads

The Ford Transit Connect Van now comes with standard Electronic Stability Programme (ESP).



— Vehicle with ESP.
— Vehicle without ESP.

A Vehicle experiences understeer on approach.

B Vehicle experiences oversteer on exit of bend.

*Note: A rear-facing child seat should never be placed in the front passenger seat when the Ford vehicle is equipped with an operational front passenger's airbag.

Occupant safety

A driver's airbag is standard, with a passenger's airbag* and side airbags available as options.



Lockable bonnet

Can only be released using the vehicle key. Mechanism is shrouded to resist tampering.



Full-height steel bulkhead

Provides added security. Also offered with glazed top panel, as shown. (Option)



Auto Hazard Warning Lights

Turn indicators automatically flash under heavy braking as a warning to following drivers. (Standard)



Transit Connect Van

Model shown is finished in Frozen White.

Built on a dedicated commercial vehicle platform, the hard-working and established Ford Transit Connect Van brings you all that is great about the range: robust construction; flexible loadspace; and a comfortable, car-like driving environment.



Exterior features include:

- 6x15" steel wheels with hub covers
- ESP with Disc Brakes all -round
- Tinted glass
- Manually-operated, door mirrors
- Hinged, unglazed rear load doors

Exterior features include:

- Electrically-operated windows
- Remote central locking
- Passenger-side sliding side load door
- Home Safe headlights

Interior features include:

- Modern facia design
- Model 6000 RDS EON AM/FM stereo radio/CD with steering column-mounted remote audio controls, 'Keycode' anti-theft coding and auxiliary 3.5 mm music connector
- Steering column adjustable for rake/reach
- Front seat-back storage pockets
- Centre storage
- 12-volt front power socket
- Six DIN-compliant floor tie-down eyes

Interior features include:

- Fold-flat passenger seat
- High-mounted storage facility



Remote audio controls

Fingertip control of main audio functions. (Standard)



Load floor mat

Protects both your van and its load. (Standard)



Remote central/double locking

Convenient and secure. (Standard)



Home Safe headlights

Remain illuminated for a short while once you're parked to guide you to your door. (Standard)



Unglazed cargo doors

For added security. (Standard)



Electrically-operated windows

(Standard)



Sport Van (Special Order)

Model shown is finished in Panther Black metallic paint. (Option)

Transit Connect Sport Van's wide bonnet stripes combine with dynamic 18" alloy wheels, 225/40 tyres, twin exhaust tailpipes and muscular styling to make a real statement.



Features additional to Limited Van

- 18" 5-spoke design alloy wheels
- Body colour front and rear bumpers with lower spoilers*
- Rear roof spoiler*
- Side skirts*
- Twin bonnet stripes*
- Twin exhaust tailpipes with chrome-finish
- Driver's and passenger's side unglazed sliding load doors
- Perimeter alarm
- Leather seat trim (option)
- Heated front seats
- Tyre inflator kit in lieu of spare wheel

*Supplied by MS Design. Please note that all supplier-branded accessories are provided with a supplier's warranty and are subject to the supplier's warranty terms. Such accessories are, therefore, excluded from the Ford warranty.
Please note: 18" low profile sport tyres may possibly have shorter service lifetime compared with standard light van tyres, depending on load and driving conditions. For more information, please speak to your local Ford Dealer.



Leather steering wheel
(Standard)



Alloy wheels
18" 5-spoke design alloy wheels with 225/40 tyres. (Standard)



Mirror caps
In contrasting silver. (Accessory)



Twin bonnet stripes
(Standard)



Rear roof spoiler
(Standard)



Side skirts
(Standard)



Thule load stop and lockable ladder holder

For the transportation of ladders, pipes or scantlings – the first choice in commercial usage.



When your vehicle is an integral part of your business, it's important you have the freedom to tailor its specification exactly to your needs. So, every item within our extensive range of options and accessories has been specially developed to help enhance your efficiency and image.

Accessories

Image left shows:

Steel cage roof carrier

Sturdy steel cage roof carrier adds a new dimension to transporting materials and equipment. (Accessory)

Base roof carrier

Roof carrier is the base for all roof transportation attachments. (Accessory)

16" alloy wheels

6-spoke design alloy wheels. (Accessory)

Equinox side bars

Stylish stainless steel bars with underbody subframe help protect the vehicle from accidental damage on high kerbs. (Accessory)

Images below show:

Dometic cooling fridge

Efficient, tailor-made cooling box uses 12-volt onboard system with integrated gel battery or, when parked, 230-volt mains supply. Maintains constant temperature of around 2°C at ambient temperature of 30°C. Total gross volume approximately 900 litres. Certified by ATP for food transport within Europe. (Accessory)

Hygiene Pack

Tailor-made fibreglass cover lining the entire loadspace with a bright, easy-to-clean surface. Certified by ATP for food transport within Europe. (Option)

Note The Bluetooth® word mark and logos are owned by the Bluetooth SIG, Inc. and any use of such marks by Ford Motor Company Limited and its associated companies is under licence. Other trademarks and trade names are those of their respective owners.

**Van racking solutions**

Keep everything safely in its place with a range of tailor-made van racking. Systems available include Sortimo, Edström and Aluca (shown). (Accessory)

**Loadspace liner**

Heavy duty liner helps to protect your load floor from accidental damage. (Accessory) Image shows Ford Transit Van. Also available on Ford Transit Connect.

**Thule Professional roof carrying systems**

A complete range of Thule products available to suit your needs. Available from your Ford Dealer. (Accessory)

**17" alloy wheels**

17" 9x2-spoke classic design alloy wheels and 205/50 R17 tyres. (Accessory)

**Mobile navigation**

Compatible navigation systems available from your Ford Dealer (accessory).

**Parrot car kits**

These Bluetooth® hands-free kits connect via the factory-fitted audio system. The example shown is the Parrot MKi9200 with 2.4" colour TFT screen, with built-in voice recognition and automatic phone-book synchronisation. (Accessory)



We are all beginning to understand the impact that mobility is having on climate change. While we can't change things overnight, we are working very hard to find solutions.

Our range of finance, insurance, service and assistance options is designed with just one thing in mind – making life easy for you.

Making a difference now

Our latest range of engines complies with Euro Stage IV regulations. Duratorq TDCi diesel engines now develop more torque whilst delivering lower emissions. Our Duratec 2.3L engine can be converted to run on liquefied petroleum gas (LPG) or compressed natural gas (CNG).

In the Ford car range, several models have the option of a Flexifuel engine which reduces harmful emissions by 30 to 80** per cent compared with conventional petrol engines.

Protecting the future

Using our Product Sustainability Index, a design for sustainability management tool, we are addressing the environmental, social and economic impacts of our vehicles from the earliest stages of their development.

We are working on a wide range of vehicle technologies from biofuels to hybrids and clean diesels, and in the long term to hydrogen fuel-cell technology with the potential for near zero CO₂ emissions.

Improving our manufacturing facilities

We are constantly working to minimise the impact of our facilities on the environment. This includes pioneering on-site generation of electricity from sun and wind, implementing leading-edge manufacturing processes and full certification to the international standard for Environmental Management Systems; ISO 14001. This has led to improved environmental performance through savings in energy, water, material and waste-handling requirements.

Recycling for good

In the interests of sustainability, many of our components contain recycled and renewable content. All Ford vehicles are at least 85% recyclable and 95% recoverable in accordance with ISO 22628. We offer free take-back for qualifying vehicles at the end of their lives. All our take-back points are fully licensed and must also meet additional Ford quality standards for the professional receipt, treatment and recovery of end-of-life vehicles.

This brochure has been produced on paper based on fibres from sustainable forestry, using a 100% chlorine-free (TCF) bleaching process.
*Dependent on feedstock used and production process. (Source: EUCAR CONCAWE study.) Ford supports the sustainable production of biofuels.



Programme for the Endorsement of Forest Certification schemes

This brochure is printed on PEFC certified paper promoting sustainable forest management.

Ford Credit

Your local Ford Transit Specialist Dealer can offer simple, plain language advice on the various ways of financing your purchase. They can help you complete an application and get a decision, usually within 15 minutes. Alternatively, our Ford Credit sales desk is always happy to help on **ph:1890 812 333**.

Business Hire Purchase is a straightforward way to finance your business vehicle. Funding your vehicles by a separate line of credit leaves working capital free to be used in the business.

Vehicle Lease Plan is a straightforward way to lease your vehicle for an agreed period in exchange for a fixed rental. Title to the goods remains with Ford Credit for the duration of the agreement.

Contract Hire is the flexible way to finance, and the ideal plan if you are looking to regularly renew your vehicle. It includes an arrangement at the outset whereby, the vehicle is returned to the supplying Ford Dealer on completion of the lease term.

Payment Protection goes hand in hand with your vehicle finance. It makes good sense and provides you with a financial safety net in case of the unforeseen. With Ford Credit, your monthly repayment would be taken care of, which could free up money to cover the additional expenses that crop up at times like these.

Ford Insure Visit our Ford Insure website at <http://www.ford.ie/insurance> where you can obtain a car insurance quote and purchase a policy online, 24 hours a day, 365 days of the year. You can also contact our call centre on **1850 449 444**. Call centre opening times are: Monday – Friday: 9am to 8pm (excluding Bank Holidays) & Saturday: 10am to 2pm. Why not try us out?

Services

We understand that a Dealer network committed to meeting the needs of commercial vehicle customers is just as important to your business success as having a great commercial vehicle. Our Ford Dealers provide a range of additional services tailored to your needs, making it their business to keep your business going.

To find the location of your nearest Ford Dealer, visit www.ford.ie

Ford Protect Every new Commercial Vehicle is protected by a 2-years/unlimited kilometres bumper-to-bumper warranty. Upgrades are also available, giving you the option of worry free motoring for up to 4 years.

Ford Perforation Warranty Every new Ford commercial vehicle is covered by the Ford Perforation Warranty for 6 years* from the date of first registration.

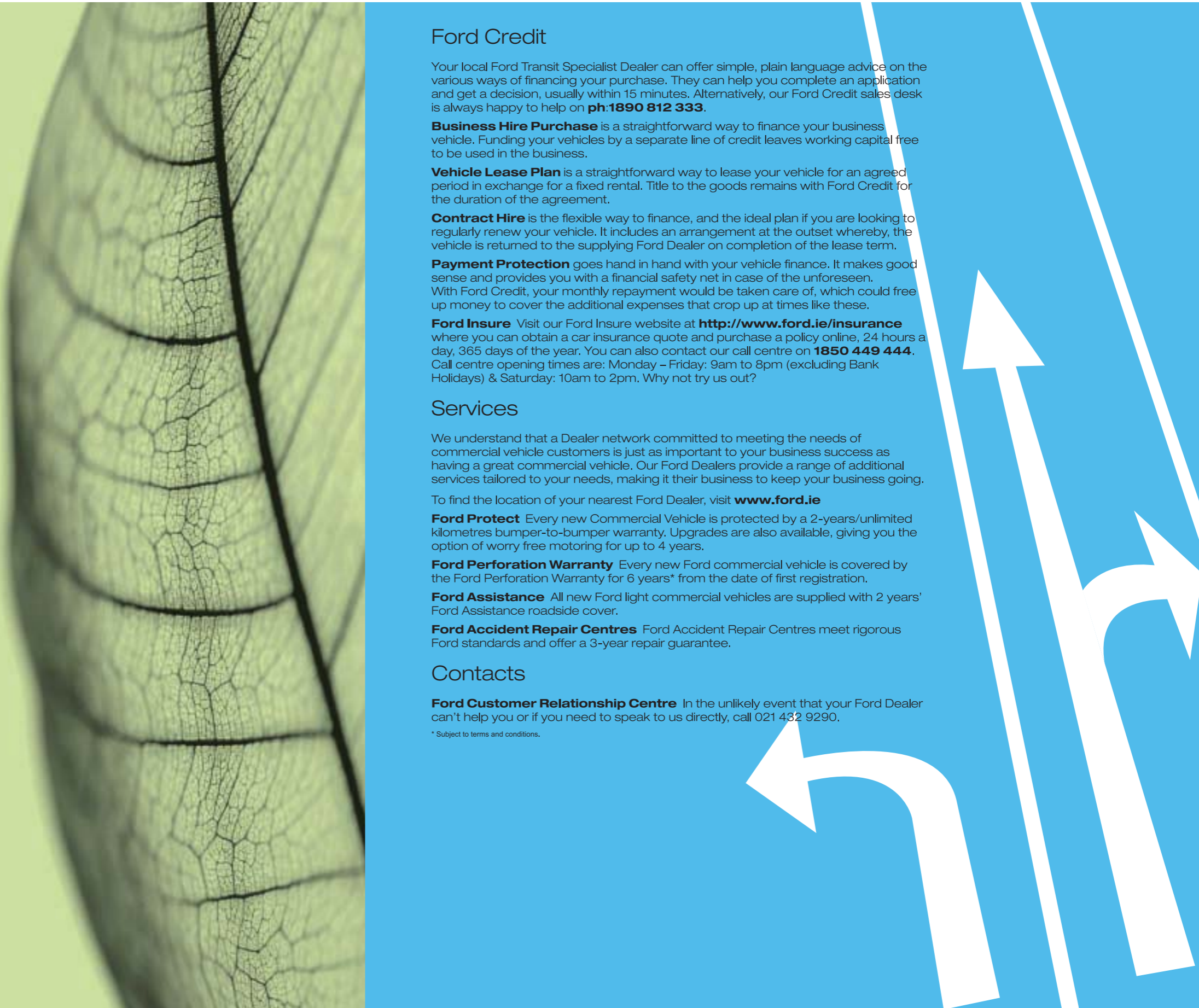
Ford Assistance All new Ford light commercial vehicles are supplied with 2 years' Ford Assistance roadside cover.

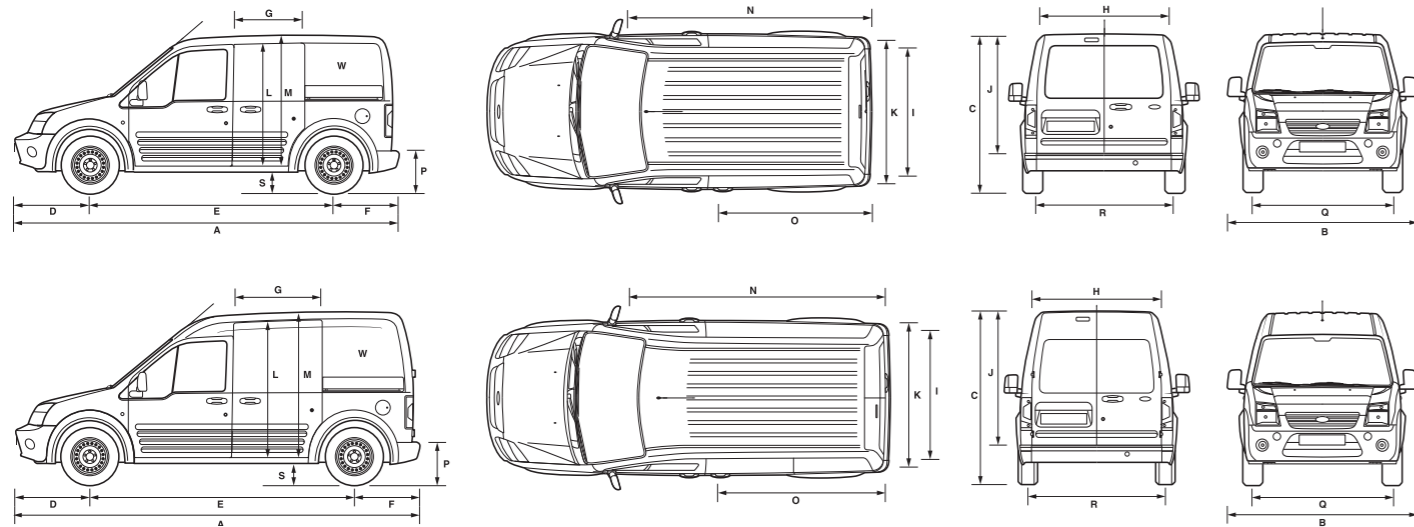
Ford Accident Repair Centres Ford Accident Repair Centres meet rigorous Ford standards and offer a 3-year repair guarantee.

Contacts

Ford Customer Relationship Centre In the unlikely event that your Ford Dealer can't help you or if you need to speak to us directly, call 021 432 9290.

* Subject to terms and conditions.





Dimensions (mm)

	Transit Connect SWB Low Roof Van	Transit Connect LWB High Roof Van
A Overall length	4275	4525
B Overall width with mirrors	2044	2044
B Overall width without mirrors	1795	1795
C Overall height (laden/unladen)	1739/1815	1906/1980
D Front overhang	861	861
E Wheelbase	2664	2912
F Rear overhang	749	749
G Side door entry width	606	809
H Rear door opening width below belt	1293	1293
I Load width between wheel arches	1226	1226
J Rear door opening height	1145	1316
K Load width	1490	1490
L Side opening height	1040	1181
M Load floor to roof	1193	1364
N Load length (max) (passenger's seat folded)	2467	2714
O Load length (laden to belt line)	1583	1830
O Load length (back of front seat)	1739	1986
O Load length (passenger's fold-flat seat up)	1760	2007
P Loading height (laden/unladen)	496/598	496/601
Q Front track	1505	1505
R Rear track	1552	1552
S Ground clearance	166	166
W Cargo volume	2.8 (cu.m)	3.7 (cu.m)
W Cargo volume (front passenger seat folded)	3.4 (cu.m)	4.4 (cu.m)
Additional Information		
Interior front		
Effective headroom	1147	1304
Maximum effective legroom	1008	1008
Shoulder room	1382	1382
Hip room	1284	1284

Model availability

	SWB	LWB
Transit Connect		
1.8 Duratorq TDCi Diesel (75 PS)	●	-
1.8 Duratorq TDCi Diesel (90 PS)	○	●
1.8 Duratorq TDCi Diesel (110 PS)	○	○

○ = Optional engines with a cost premium above entry level engines.

Weights and loads

	Payload (Gross) kg ^o	Gross vehicle mass (kg)	Kerb mass (kg)*	Front axle kerb mass (kg)	Rear axle kerb mass (kg)	Axle ratio	Max. GTM (kg) with quoted axle ratio
T200 SWB Low Roof Van							
1.8 Duratorq TDCi Diesel (75 PS)	648	2040	1392	832	560	4.06	2840
1.8 Duratorq TDCi Diesel (90 PS)	641	2040	1399	839	560	4.06	2840
T220 SWB Low Roof Van							
1.8 Duratorq TDCi Diesel (110 PS)	833	2240	1407	846	561	3.80	3040
T230 LWB High Roof Van							
1.8 Duratorq TDCi Diesel (90 PS)	902	2340	1438	854	584	4.06	3140
1.8 Duratorq TDCi Diesel (110 PS)	895	2340	1442	860	582	3.80	3140

*Maximum gradability 12% at full GTM; 20% at full GVM. ^o = Gross vehicle mass, less kerb mass. All kerb masses quoted in this brochure are subject to manufacturing tolerances and are for vehicles with minimum equipment, the additional weight of any options or accessories should be taken into account when calculating the final payload of the vehicle. *Represents the lightest kerbweight assuming full fluid levels and 90% fuel levels, subject to manufacturing tolerances and options, etc., fitted.

Engine data

	Engine technical features	Maximum power ^o	Maximum torque ^o	cDPF Option
1.8 Duratorq TDCi Diesel 55 kW (75 PS) 1753 cc	Cylinders – 4 in-line ; SOHC; 8 valves; direct injection with high-pressure, common-rail, multipoint fuel injection system; fixed geometry turbocharger with intercooler; electronic throttle	55 kW (75 PS) at 4000 min ⁻¹ (rpm)	175 Nm at 1800 min ⁻¹ (rpm)	
1.8 Duratorq TDCi Diesel 66 kW (90 PS) 1753 cc	Cylinders – 4 in-line ; SOHC; 8 valves; direct injection with high-pressure, common-rail, multipoint fuel injection system; fixed geometry turbocharger with intercooler and transient torque overboost function; electronic throttle	66 kW (90 PS) at 4000 min ⁻¹ (rpm)	220/240* Nm at 1750 min ⁻¹ (rpm)	○
1.8 Duratorq TDCi Diesel 81 kW (110 PS) 1753 cc	Cylinders – 4 in-line ; SOHC; 8 valves; direct injection with high-pressure, common-rail, multipoint fuel injection system; variable nozzle turbocharger with intercooler and transient torque overboost function; electronic throttle	81 kW (110 PS) at 3500 min ⁻¹ (rpm)	250/280* Nm at 1500-3200 min ⁻¹ (rpm)	○

^oTested in accordance with ISO 1585. *With transient overboost. **Note:** All Transit Connect Engines are Stage IV emissions level.

Fuel, performance and emissions

	CO ₂ emissions (g/km) ^{oo}	Fuel consumption (L/100 km) ^{oo}			Performance ^o		
		Urban	Extra Urban	Combined	Max. speed (km/h)	0-100 km/h (secs)	80-120 km/h* (secs)
Ford Transit Connect							
1.8 Duratorq TDCi Diesel 75 PS	159	7.2	5.5	6.1	142	21	18.5
1.8 Duratorq TDCi Diesel 90 PS	159	7.2	5.5	6.1	152	17.4	14.1
1.8 Duratorq TDCi Diesel 110 PS – SWB	159	7.4	5.2	6.0	164	14.4	11.3
1.8 Duratorq TDCi Diesel 110 PS – LWB	159	7.4	5.2	6.0	164	14.6	11.5

*In 5th gear. ^oFord test figures. **Note:** All vehicles are 5-speed manual. ^{oo}All CO₂ emissions figures in g/km and fuel consumption figures in L/100km are from officially approved tests in accordance with 80/1268/EEC as amended. The CO₂ emissions and fuel consumption test figures shown in the chart do not express or imply any guarantee of the emissions or fuel consumption of a car of the class in question. All the figures are based on tests conducted on vehicles with standard wheels and tyres; optional or accessory wheels and tyres may have an effect on the emissions and fuel consumption of a vehicle.

Mechanical features

	SWB	LWB
Brakes		
Diagonally-split, with dual-line servo-assistance. Front and Rear Disc Brakes	●	●
Engines		
cDPF (Coated Diesel Particulate Filter) (90 and 110ps engines only)	○	○
Fuel tank		
Capacity – 60 litres	●	●
Steering		
Power-assisted	●	●
Steering column – Rake/reach-adjustable	●	●
Suspension and body		
Front – Independent with MacPherson struts, variable rate coil springs, gas-pressurised shock absorbers, and anti-roll bar	●	●
Rear – Multi-leaf springs, gas-pressurised shock absorbers, and anti-roll bar (SWB is Single leaf springs)		●
Towing eyes – Front and rear	●	●
Turning circle		
Kerb to kerb 11.0 m	●	
Kerb to kerb 11.9 m		●

● = Standard.

Safety and security features

	SWB	LWB
Safety		
Anti-lock brakes with rear disc brakes	●	●
ESP – Electronic Stability Programme (not available with Fleet - L2 Transit Connect)	●	●
Side impact door beams, front. Collapsible steering column. Energy absorbing crumple zones, front and rear	●	●
Airbag – Driver's	●	●
Airbag – Front passenger's*	○	○
Security		
Alarm – Perimeter	○	○
Fuel cap – Locking body colour flap	●	●
Immobiliser – Passive Anti-Theft System (PATS)	●	●
Locks – High security, lock-in-latch system, shielded with strengthened mountings	●	●
Locks – Remote keyless entry (not available with Fleet - L2 Transit Connect)	●	●
Locks – Double locking	●	●
Locks – Key-operated bonnet release	●	●
Vehicle Identification Number (VIN) – Visible	●	●

● = Standard, ○ = Option, at extra cost. □ = Option pack. ***Note: A rear-facing child seat should never be placed in the front passenger's seat when the Ford vehicle is equipped with a front passenger airbag.**

Exterior features

	SWB	LWB
Exterior appearance and styling		
Bodyside mouldings – One-piece, Torque Grey (N/a on L2 Fleet model)	●	●
Bumpers – Torque Grey	●	●
Paint – Metallic	○	○
Wheel lip mouldings – Torque Grey	●	●
Exterior functional		
Door mirrors – Manual internal control, flat folding, black housings	●	●
Door mirrors – Power	○	○
Door mirrors – Enhanced rear vision	●	●
Doors – Tailgate, glazed	○	
Doors – Hinged rear doors, unglazed	●	●
Doors – Passenger side sliding load door, unglazed	●	●
Doors – Dual side sliding load doors low-roof, unglazed	○	○
Parking distance sensor – Rear	○	○
Light Tinted glass – Front door windows and windscreen only	●	●
Towing eyes – Front and rear	●	●
Wheels – 6x15 steel with centre cap (full-size spare) and 195/65 R15 tyres	●	●
Windscreen – Laminated	●	●
Windscreen – Quickclear heated front (includes heated washer jets)	○	○
Wipers – Front, 2-speed, with intermittent wipe and electric wash	●	●
Wipers – Rear, with fixed intermittent wipe and electric wash and electric rear window (requires glazed rear doors)	○	○
Exterior lighting		
Halogen headlights, side lights, rear fog light, reversing light	●	●
High-mounted rear brake light	●	●
Fog lights – Front	○	○

● = Standard, ○ = Option, at extra cost.

Interior features

	SWB	LWB
Audio		
Stereo AM/FM radio/CD – Model 6000 RDS EON, 'Keycode' anti-theft coding, 2 speakers including column stalks	●	●
Stereo AM/FM radio/CD – Model 6006 RDS EON, 'Keycode' anti-theft coding, 2 speakers including column stalks	○	○
Carpet and trim		
Cab floor covering – Rubber	●	●
Door trim – Moulded panel with pull handles and, on front doors only, door bins	●	●
Gear lever gaiter – Black	●	●
Gear knob – Black with acrylic insert	●	●
Interior lighting		
Courtesy light – Header-mounted, front door-operated	●	●
Load compartment lights – One, roof mounted	●	●
Instruments and controls		
Control stalks – Column-mounted for master lights, indicators and wash/wipe functions	●	●
Illuminated heater controls – 4-speed fan. Four vents with temperature and direction control	●	●
Instruments – Speedometer, engine temperature, fuel level gauges, tachometer and trip recorder	●	●
Warning indicators for oil pressure, direction indicators, glow plugs, main beam, ignition/alternator, brake failure, handbrake on, airbag(s), low fuel level, 'lights on' audible warning, ABS, traction control, check engine	●	●
Steering wheel – Black (Hard Wearing PU Material)	●	●
Seats and seat belts		
Front seat – Driver's 4-way manual adjustment	●	●
Front seat – Passenger's fold-flat seat for loadbox extension (not available in combination with Full Steel Bulkhead)	●	●
Front seats – Anti-submarining, fully reclining with height-adjustable head restraints	●	●
Seat trim – Fabric	●	●
Seat belts – Front, inertia reel, with grabbers, static buckle and roto-pretensioner (driver's seat only) and height-adjustable mounts	●	●
Comfort and convenience		
Accessory socket	●	●
Air conditioning – CFC-free with air recirculation	○	○
Centre console – Includes coin tray, pen holder and two cup holders	●	●
Clock – Digital	●	●
Glovebox	●	●
Heater – Recirculation	●	●
Storage – Centre fascia-mounted clipboard holder	●	●
Sunvisor – Driver's with ticket strap	●	●
Sunvisor – Passenger's	●	●
Windows – Front, electrically-operated with 'one touch' lowering on driver's side	○	○
Load compartment		
Bulkhead – Full width steel, half-height	○	○
Bulkhead – Full width, full-height mesh with folding facility	●	●
Bulkhead – Full width steel, full-height (not available with 110ps)	○	○
Bulkhead – Full width steel, full-height with window	○	○
Load liner – Floor	○	○
Tie-down 'D' rings – Six, complying with DIN 75410 Spec	●	●
Auxiliary power socket – Load compartment	○	○

● = Standard, ○ = Option, at extra cost.

Colour and trim

Options

	SWB	LWB
Fleet or L2 Transit Connect Van – deletes the following Spec: ESP, Bodyside Mouldings, Side Load Door, Electric Windows, Remote Central Locking, Folding Passenger Seat, Trip Computer and is limited in colour choice and series (Talk to your Dealer to learn more)	○	○
SVO paint	○	○
250 degree rear cargo doors (SVO)	○	○
Unglazed Liftgate (SVO)	○	

○ = Option, at extra cost.

Transit Connect Van trim and body colour availability

Model	Seat trim	Trim colour	Classic colours			Contemporary colours						
			Frozen White	Colorado Red	Blazer Blue	Sea Grey*	Chill*	Moondust Silver*	Avalon*	Vision*	Ink Blue*	Panther Black*
Transit Connect	Lozenge Fabric	Dark Pewter	●	●	●	○	○	○	○	○	○	○

● = Standard, ○ = Optional, at extra cost. *Metallic Paint is an option at extra cost.

Classic colours



Classic colours

1. Colorado Red
2. Frozen White
3. Blazer Blue
4. Moondust Silver*
5. Panther Black*

Contemporary colours

6. Sea Grey*
7. Chill*
8. Avalon*
9. Ink Blue*
10. Vision*

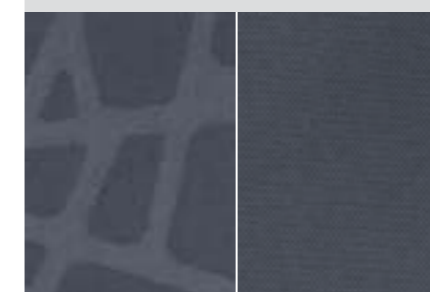
*Metallic paint is an option, at extra cost. Note The images used are to illustrate body colours only and may not reflect the vehicle described. Colours and trims reproduced within this brochure may vary from the actual colours, due to the limitations of the printing processes used.

Contemporary colours

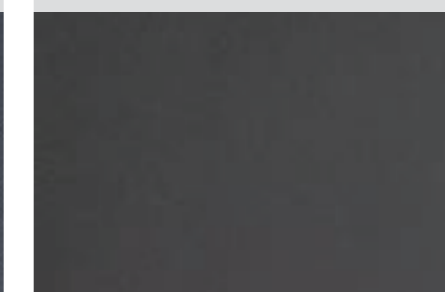
10

Ford understands the colour you select may represent your corporate colour choice for years to come. Therefore we recommend you select one of our classic colours or, if you need a unique colour for your fleet, speak to your local dealer about our SVO colours that offer you more than 100 colour options. Contemporary colours reflect the latest trends in vehicle colouring but are subject to deletion at short notice.

Ford Transit Connect
Lattice/Twill cloth seat trim in Dark Pewter.



Ford Transit Connect
Prima Grain vinyl in Dark Pewter. (Option)



Ford Transit Connect Trend and Sport Van
Lattice/Twill cloth seat trim in Brilliant Blue.



Illustrations, descriptions and specifications. This brochure was correct at the time of going to print. However, Ford policy is one of continuous product development. The right is reserved to change specifications, colours and prices of the models and items illustrated and described in this publication at any time. For the latest details always consult your Ford Dealer. **Optional equipment.** Throughout this publication, wherever a feature is described as being an 'Option' or 'Optional Fitment/Pack', etc., you should assume that it will be at extra cost to the base vehicle, unless specifically stated to the contrary. All models and colour combinations are subject to availability. **Note.** Some images portrayed are of a pre-production model and/or are computer generated, therefore, the design/features on the final version of the vehicle may differ in various respects. In addition, some of the features shown on the vehicles may be optional. **Note.** This brochure contains both original Ford accessories as well as a range of carefully selected products from our suppliers, which are featured under their own brands. All supplier branded products are subject to warranty terms defined by the relevant suppliers and do not lie within the responsibility of Ford. **Note.** The Bluetooth® word mark and logos are owned by the Bluetooth SIG, Inc. and any use of such marks by Ford Motor Company is under licence. Other trademarks and trade names are those of their respective owners.



When you have finished with this brochure, please recycle it.

Published by Henry Ford & Son Ltd,
Elm Court, Boreenmanna Rd, Cork, Ireland.
BJN 307002. FoE I51E.
PN 077502/0610/1m/IRL en
June 2010.
© Ford Motor Company Limited.

www.ford.ie

